

WL200 On Board Wi-Fi Access System

Standard
1" x 14TPI
GPS style
mounting
base

**Access the internet through wi-fi on board
with a range of up to 1km from local hotspots ...**

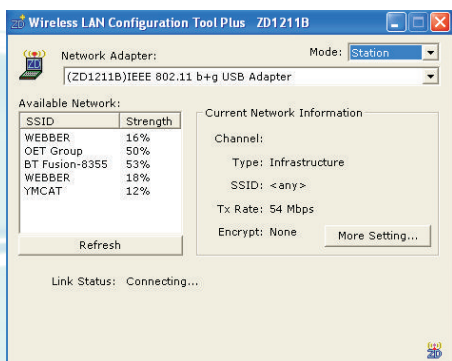
The WL200 boosts wi-fi range by up to 15x thanks to a powerful 400mW output - and with a simple USB connection, it's compatible with notebook's and installed PCs

- Plug in external wi-fi adaptor for your on board PC or notebook
- Boosts range by up to 15x with powerful 400mW output
- Up to 1 mile range from marina wi-fi hot-spots
- Plug and play setup automatically detects wi-fi points within range
- USB connection for easy installation
- Supplied with 5m cable
- Fits on standard 1" x 14TPI mount
- Self powered from PC USB connection
- 802.11b compliant -data rate up to 11Mbps
- Supplied with software
- Just 482mm long



There's no doubt about how useful an on-board internet wi-fi connection can be - you can catch up on work whilst afloat as well as being able to access sophisticated weather information on the net and communicate via email. More and more marinas are now installing wi-fi "hot spots" but signal strengths are low and normally you're limited to just a few hundred metres from the base station. Pop the laptop on a chart table and chances are, you'll lose the signal or at best it's intermittent and sod's law says your berth isn't covered or sits in a black spot.

The WL200 from Digital Yacht is a wi-fi access device that plugs directly into your PC's USB port. All the electronics are encapsulated within its high gain (8dbi) antenna and its just a



simple, plug in USB connection to your PC. It has a 400mW power output for ranges of up to 1.5km. Easy configuration software makes choosing an access point painless and simple.

£199.95 Inc Vat

WL500 For SuperYacht & Commercial Applications



The WL500 comes with dedicated external 2.4GHz antenna, 10m x LMR400 coax cable and black box modem/amplifier with 12v DC power connection. Its ideal for larger vessels or commercial installations. Connects to host PC through USB interface and offers extended ranges up to 3km (depending upon installation). Models can have variable power output depending upon application

Specifications

CONNECTION:	USB 1.1
WIRELESS STANDARD:	802.11B
DATA RATE:	Up to 11Mbps
VOLTAGE:	5V DC From USB Port
CURRENT:	355-500mA
TRANSMIT POWER:	400mW ERP
RANGE:	Outdoor up to 1500m
SECURITY:	64/128 bit WEP encryption
ANTENNA:	8dB Omnidirectional 35 degree vertical beamwidth
OVERALL LENGTH:	482mm
OPERATING SYS:	Win XP/XP Pro/Mac
MOUNTING:	1" x 14TPI to suit standard mounts
CABLE LENGTH:	5M extendable with powered USB extender available from 3rd party
WARRANTY:	Two years

Available from: